



GOUTAM & COMPANY



WWW.GOUTAMANDCOMPANY.COM/

keypersons/



Director Operation/ NARENDER SINGHAL

The Organisation that was started by Mr. Narender Singhal Director Operations, has expanded in terms of products, turnover, perfection and clientage all through these years. Mr. Narender Singhal has vast experience to work in the line of products manufactured by the Organisation. His vision towards the business and commitment to quality has made the organisation one of the fastest growing manufacturing units in the segment. Mr. Narender Singhal is committed towards making long term relationship with customers as well as vendors. For this he believes that transparency and commitment to quality as well as timely delivery are the way to strengthen these relationships. His belief is that it is the mutual bonding between the two parties that leads them to the path of success. His belief is that before our customer is satisfied with our services we have to satisfy ourselves that the product is in confirmation to the expectation of the customer.

Business Head/ GOUTAM SINGHAL

Mr. Goutam Singhal, Business Head has taken care of the day to day operations for the last many years. The day to day activities of production and other allied jobs are being undertaken under his young and energetic leadership. Being the part of promoter family, Mr. Goutam has seen the organisation grow from his childhood. Being a member of gen-X, Mr. Goutam has proved his excellence in managing the affairs of the organisation well in terms of the rapidly growing demands at par with the global standards. His stress is on upgrading the technical facilities to match the global standards and keep upgrading. His idea is to make best use of technology to get optimum level of production and sales. This, he believes, motivates the workforce for contributing more for the benefits of the organisation and be on top of its industry segment.

“Vintage comes with age and experience.”



intro/

Goutam & company is a Escorts Ltd., Ashoka Leyland & Maruti's, Tier-1 & Tier-2 supplier. A professionally managed organization with a single purpose of providing quality based facility & achieve the customer satisfaction. The young team of professionals who have joined hands to bring out sustainable competitive advantage through innovation quality & value based pricing. This is core value & mission of the organization

Ø Goutam & company though a young organization, yet it is in the hands of experienced

persons at all levels. All persons are having rich experience in their respective fields & help the instituted quality programs like Kaizen, 5s in order to increase the productivity of the organization. The systematic approach, positive attitude & team work has resulted into achievement of continual improvement in all processes & best customer satisfaction.

Ø Goutam & company has come into existence in march, 2008 in the reputed industrial area of Faridabad. The product lines include press & weld parts. The organization is having in house tools maintenance facilities & also equipped with drill machines, lathe machine & surface grinder etc.

certification ISO 9001:2008/



Quality Policy

Goutam & company is committed to ensure timely delivery of better quality products and total customer satisfaction through active participation of all employees .

Quality Objectives



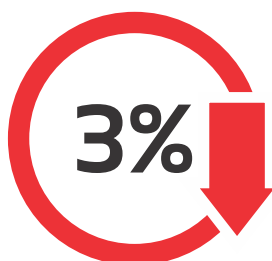
ON TIME DELIVERY



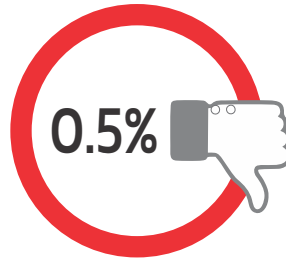
CUSTOMER SATISFACTION



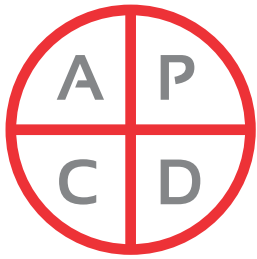
RESOLVE CUSTOMER COMPLAINTS



BREAKDOWN



REJECTION



ROAD MAP OF OUR ORGANIZATION

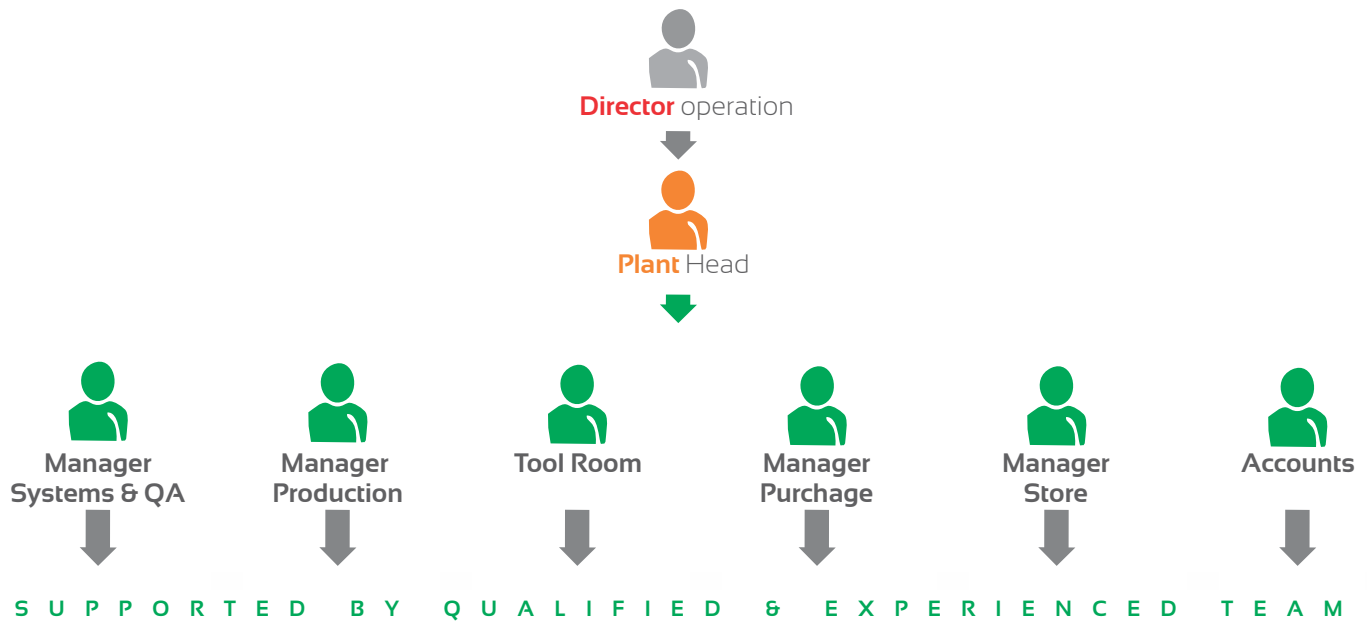
Complete -5S/

- Deep analysis using 7QCTools
- Suggestion scheme, quality circles
- Inventory Turns ratio Management
- Energy consumption Management
- Cost of poor quality & initial supply control

Customer complaint analysis/

- Delivery Failure analysis
- Red Bin analysis using basic QC TOOLS
- Daily work Management
- Monthly performance Review

organizationchart/



Scope of manufacturing unit/

- // Goutam & company is manufacturing sheet metal components and sub-assemblies from in-house and imported toolings. The components produced at Goutam & company are as per the customer's specifications.
- // Goutam & company manufactures sheet metal components for Ashoka Leyland, Maruti Suzuki Ltd., JCB India Ltd., Metso India Pvt. Ltd., ACE (Action Construction Equipment Ltd.) , Normet Pvt. Ltd., E-Track Crusher Pvt. Ltd. & Escorts Ltd.
- // Bending Length up to 6000 mm
- // Thickness ranging from 0.6mm to 25mm
- // Material- HR, CR, ALL GRADE

Departments/

// PRESS SHOP



POWER PRESSES From 20 T to 500 T CAPACITY

// WELD SHOP



EXCELLENCE IN MANUFACTURING SPOT WELD SHOP

Departments/

// TOOL ROOM



// BANDING AREA



PIPE BENDING MACHINE (3mm To 60mm)

Departments/

// HRD & ACCOUNTS



// CONFERENCE ROOM



MEASURING Instruments/



PDI



COUPING MACHINE



HARDNER TESTER

Client wise components/



EscortsTractor/

More then 250 item supply & many more



Fender Assembly (Left)



Fender Assembly (Right)



Radiator Shell Assembly



Radiator Frame Assembly



AshokLeyland/



Central Grill Assembly



ECU Mounting



ACE/



Bonet Sub Assembly



Mitalic Bonet



Diffrencial Top Cover

our machinery /

Laser Machine 1KW 1500mmx3000mm (RIBAL)



Laser Machine 3 KW 1500mmx3000mm (TRUMPF)



Laser Machine 3 KW 2000mmx6000mm (RIBAL)



our machinery /



*Pneumatic Power Press (400 Ton)
TANJIN (INDIA)*



*Hydraulic Power Press (75 Ton)
HIND*



*Pneumatic Power Press Brake
(200 Ton)*

our machinery /



Shot Blasting Machine



*Plasma Cutting Machine (2000mmx6000mm)
Pusan*

List of machinery /

S.No.	MACHINE DESC.	SPECIFICATION/RANGE	QTY.
01.	Mechanical Power Press	10 Ton To 300 Ton	23 Nos.
02.	Pneumatic Power Press	50 Ton To 400 Ton	09 Nos.
03.	Hydraulic Power Press	75 Ton To 300 Ton	07 Nos.
04.	Pneumatic Power Press Brake	150 Ton To 200 Ton	03 Nos.
05.	Laser Cutting Machine	01 KW To 03 KW	03 Nos.
06.	Plasma Cutting Machine	2000mm x 6000mm	01 Nos.
07.	Shearing Machine	(0.5-12)x1250mm to 6Ft.	03 Nos.
08.	Lathe Machine	08 Ft.	01 Nos.
09.	Milling Machine	1100 x 700mm	01 Nos.
10.	Surface Grinder	500 x 300mm To 1000 x 1000mm	03 Nos.
11.	Radial Drill Machine	250 AMP	07 Nos.
12.	Compressor	ELGI	03 Nos.
13.	Mig Welding	300 AMP To 400 AMP	50 Nos.
14.	Spot Welding	40 KVA To 75 KVA (Vijay)	05 Nos.
15.	Shot Blasting Machine		01 Nos.
16.	Hydraulic Pipe Bending	03mm To 60mm	01 Nos.
17.	Generator	82 KVA (Timken) & 350 KVA (Jakson & Co.)	02 Nos.

ourteam/





GOUTAM & COMPANY

was established in March 2008, with a space of 1900 square feet. Our strength is the dedicated family of 150 employees apart from qualified engineers and supervisors.



contactus/



9717692151/ 9810291732



goutam.company@gmail.com
info@goutamandcompany.com



goutamandcompany.com



Vill: Nariyala, Panhera Kalan Nariyala Road,
P.O.: Fatehpur Billoch, Ballabhgarh, (Hr.) 121004